



Transition to merchant silicon in carrier networks

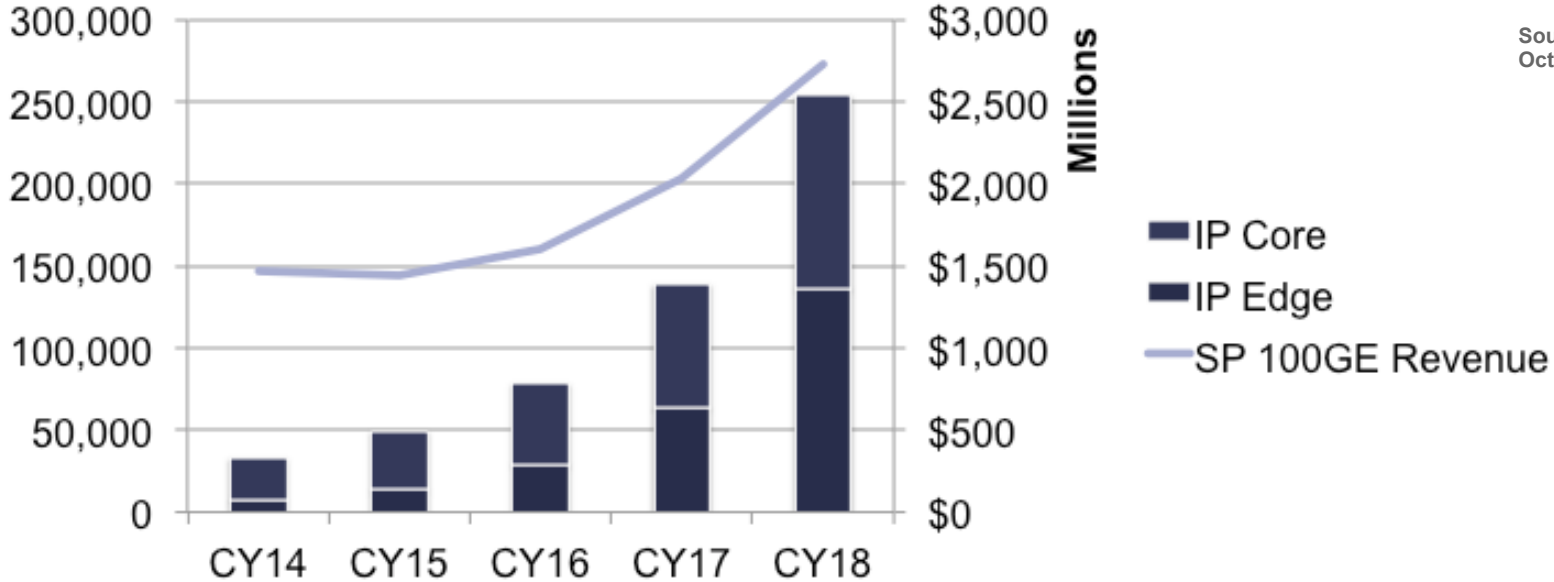
Usen Tulemisov, PhD

Senior Systems Engineer, Cisco

AusNOG 2015

100GE Adoption Forecasts

Aggressive Growth CY16-CY18

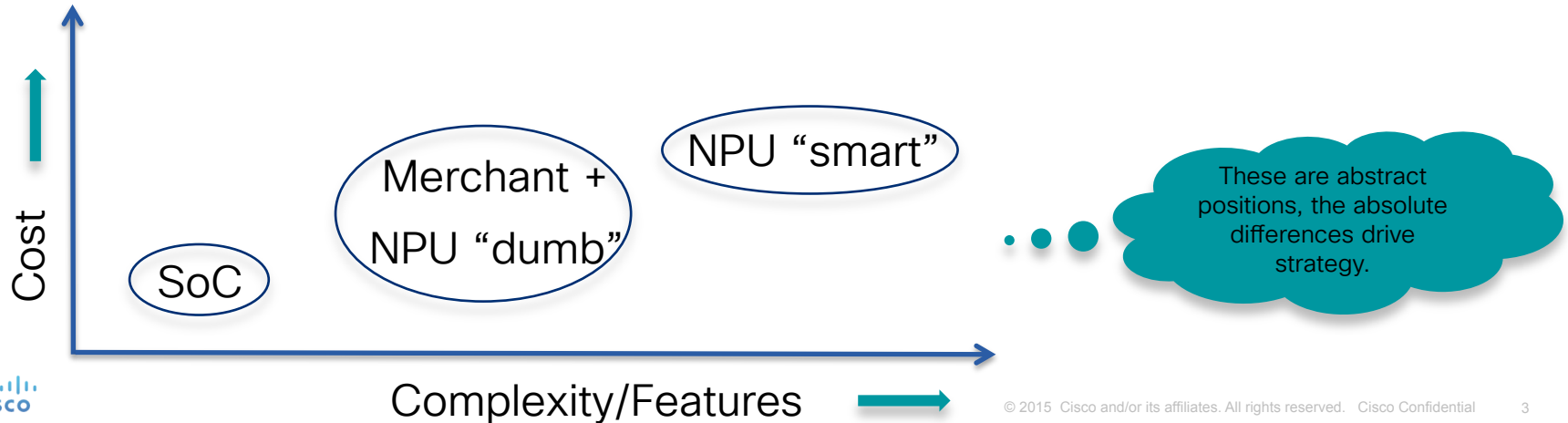


Source: Infonetics
October 2014

- 100GE is accelerating and peak adoption is expected CY16-CY18
- Major growth areas driving 100GE are DCI, Metro Aggregation and Core

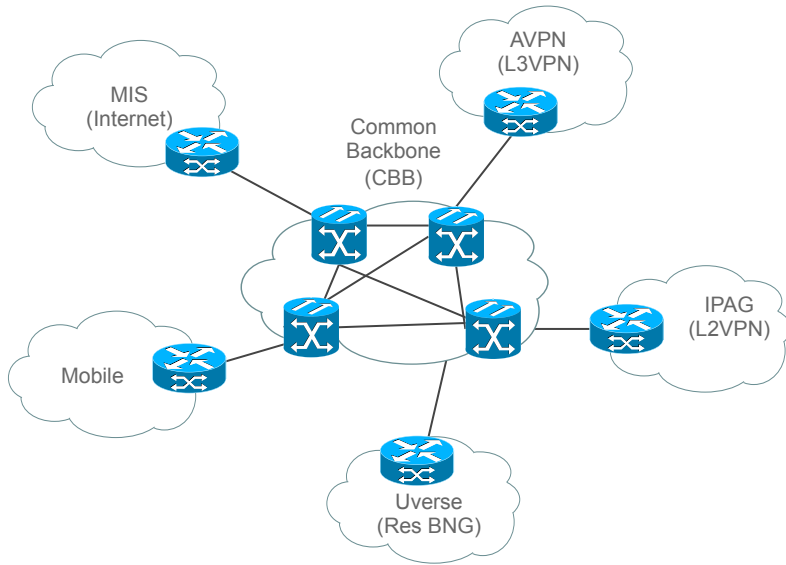
Merchant/Custom Silicon Forwarding Recap

	SoC	NPU (merchant)	NPU (merchant) +	Custom
Scale	-	+	++	+++
QoS	-	+	++	+++
ECMP Load Balancing	+	+	+	+++
Programmability / Features	-	+	+	+++
Service-ability	-	-	-	+++
Cost	+++	++	+	-

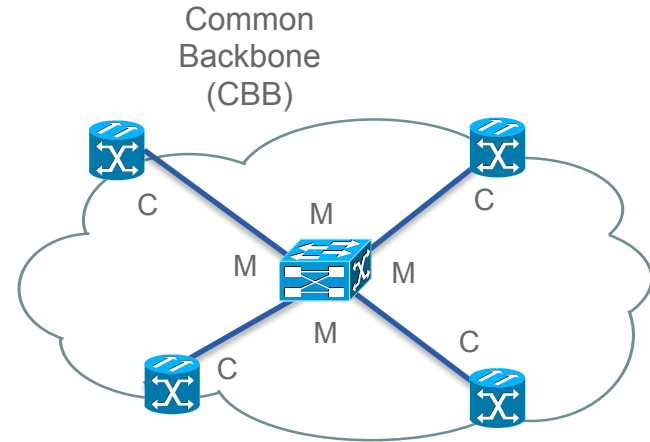


Core Transport Use Case

Present Mode of Operations (PMO)

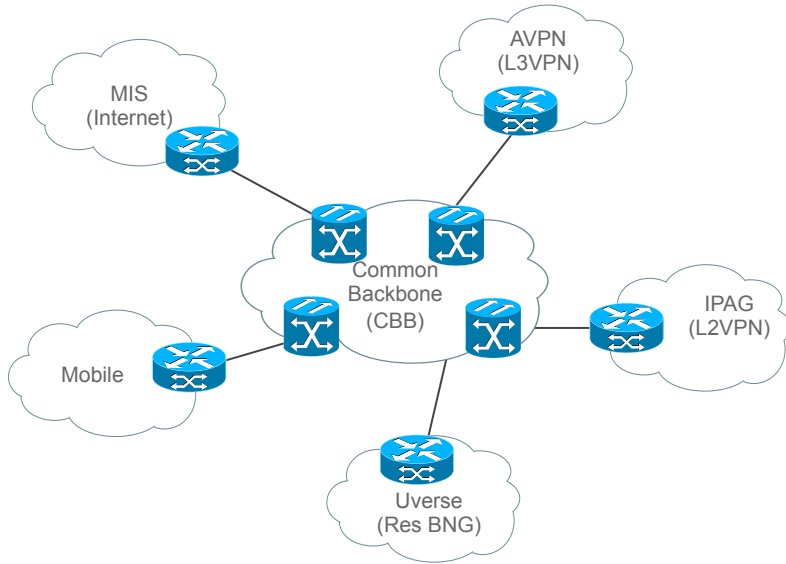


Future Mode of Operations (FMO)



Edge Use case

Present Mode of Operations (PMO)



Future Mode of Operations (FMO)

